

EC DECLARATION OF CONFORMITY

This document is the conformity declaration concerning safety switches and relays, conform to the Machine Directive 2006/42/CE and the Directive 2004/108/CE.

ELECTROMECHANICAL SAFETY SWITCHES

Range	Safety Standards	Approvals conformity
2SSR24BX	ISO13849-1	CE
2SSR24V	ISO13849-1	CE
3SSR24V	ISO13849-1	CE
4SSR24BX	ISO13849-1	CE
5SSR24BX 5SSR24BX-OX 5SSR24BX-US	ISO13849-1	CE

Safety category = 1 (EN 954-1)
PL=c (ISO 13849-1)
B10d=2 000 000
dop=365 j
hop=24 h
F=1/h
In=100mA
TM= 20 years
Checking period=1/year
Type 4 acc. ISO 14119
average level on request



U.S. market : All products are manufactured with UL components and 94VO housing

We hereby certify that the hereafter described safety components both in its basic design and construction conforms to the applicable European Directives.

Description :

Coded safety-sensor with process Acotom® conform to EN 609457-5-1.

Person authorized for the compilation of the technical documentation :

Christophe PAYS from COMITRONIC-BTI



Place and date of issue : Noisy, fev. 28, 2015

Authorised signature

Michel Conte

Director

PROCESS ACOTOM®



FURTIF 4SSR24BX technical data sheet

Thank you for your confidence in BTI products.

This product has been designed and manufactured to the highest quality standards.

1. Application

The 4SSR24BX is a coded electronic autonomous sensor using our process ACOTOM® allowing to detect the opening of the mobil protectors on dangerous machines. Housed in two polycarbonate cases (transmitter and receiver), it provides two NO contacts free of potential.

2. Fixing and wiring

With two square lugs, the two parts of 4SSR24BX FURTIF can be easily fixed with diam. 4mm screws (ZU4 washers provided). Optional special anti-tamper screws and tools. The receiver is fitted out with a 5mm diam. and a 3, 6 or 12m length multiwire. (Other lengths on request).

3. Functioning

The 4SSR24BX FURTIF is supplied with 24v AC or DC.

When the two targets of the receiver and transmitter are facing each other and if the code is recognized, the two NO lines close. The green led lights on.

If the code is not recognized or if there is a misalignment, the red led lights on and the lines are not controlled.

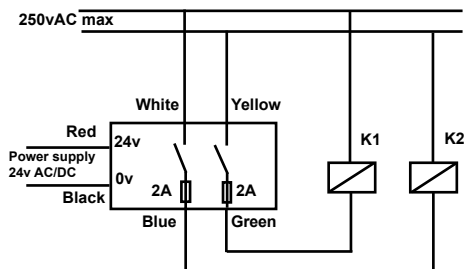
Advice

The installation has to be periodically checked. Our engineers team stays at your disposal to answer your questions and analyse all your specific demands (studies, specific needs...). Please do not hesitate to contact us.

4. Technical characteristics

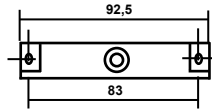
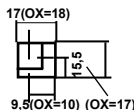
Power Supply	24Vac/dc +/- 10%	
Current	45mA	
Detection / Hystérésis	8mm / 2mm / lateral +/-10mm	
Safety contacts	2A Fast Fuse	
Switching datas	2A 250v pilot duty & general use	
Code	133	
Temperature	-25 °C / +60 °C	
MTTFd / DC	50 years / 99 %	
Size LxIxh	Transmitter 92,5 x 17 x 25	Receiver 92,5 x 25 x 25
Weight	Transmitter 70g	Receiver 205g

5. Wiring diagram



6. Size

Emitter



Receiver

