

EC DECLARATION OF CONFORMITY

This document is the conformity declaration concerning safety switches and relays, conform to the Machine Directive 2006/42/CE and the Directive 2004/108/CE.

SAFETY SWITCHES

We hereby certify that the hereafter described safety components both in its basic design and construction conforms to the applicable European Directives.

Name of products :

Range	Safety Standards	Approvals/conformity
ANATOM M18	ISO13849-1	CE
ANATOM 78S	ISO13849-1 UL508 NKCR/C22.2 14M91	CE/UL/CSA/TÜV
ANATOM 98S	ISO13849-1 UL508 NKCR/C22.2 14M91	CE/UL/CSA/TÜV
ANATOM 78S OX	ISO13849-1 UL508 NKCR/C22.2 14M91	CE/UL/CSA/TÜV

Performance Level (PL) = e
Safety category = with AWAX
MTTFd = 100 years
Checking period=1/year
Type 4 acc. ISO 14119
average level on request



Description :

Coded safety-sensor with process Acotom[®] principle in combination with the AWAX serie of safety-monitoring modules from COMITRONIC-BTI or an equivalent safety-oriented control system fulfilling the requirements of the EN 60947-5-3 and ISO 14119.

Person authorized for the compilation of the technical documentation :

Christophe PAYS

34 Allée du Closeau

93160 Noisy le Grand

U.S. market : All products are manufactured with UL components and 94VO housing

Place and date of issue : Noisy, december 18, 2014

Authorised signature

Michel Conte

President

PROCESS ACOTOM[®]



ANATOM M18 safety switch technical data sheet

1. Application

The ANATOM M18 is a magnetic coded safety switch, using our process ACOTOM₂. It has to be connected to a safety module of our AWAX range. It offers an high uncheatability and allows the detection of the opening of guard-doors on dangerous machines. Composed of two elements in CuNi, one named the "transmitter", the other named "the receiver", it provides two NO contacts lines, free of voltage, entirely static independent and insulated from the decoding system, giving a very high user safety, and one PNP NO static contact, indicating the state of the switch, usable on a PLC. Like all safety devices, this switch must be checked periodically.

2. Compliance with the standards

The ANATOM M18 switch complies with the European Standards requirements EN 60947-5-3. Connected to an AWAX Module, it reaches category 4 according to ISO 13849-1. Protection to IP67 according to EN60529.

3. Mounting instructions

With 2 nuts and 2 locknuts, both elements of the ANATOM M18 switch can be fixed very easily. The receiver is fitted out with a M12 connector 8 pins.

4. Operating

The switch is supplied by the T11/T21 terminals of the AWAX module. When both targets of transmitter and receiver are face to face, if the code is recognized, the NO lines close. 1mm minimum distance between both elements is recommended. Detection is made at a max. distance of 6mm.

5. Wiring of inlet M12

- | | |
|-------------------|------------|
| 1 Blanc T12 | 5 Gris 0V |
| 2 Brun T21 | 6 Rose T11 |
| 3 Vert AUX PNP NF | 7 Bleu T22 |
| 4 Jaune +24V | 8 nc |

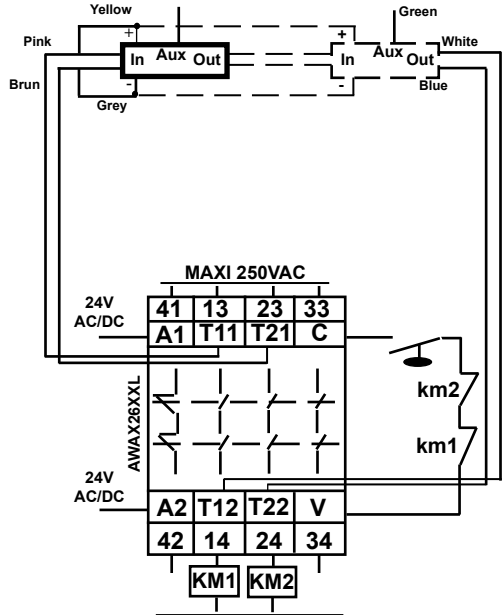


6. Technical characteristics

Supply voltage	24 VDC maxi	
Current	50mA	
Detection/Hysteresis	6mm / 2mm / +/- 30°	
Temperature	-20 °C / +60 °C	
Protection	IP67	
Size diam x l	Transmitter 18 x 64	Receiver 18 x 35
Weight	Transmitter 25g	Receiver 35g

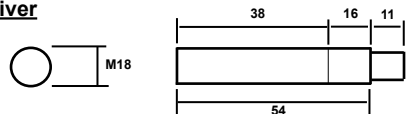
This sensor requires a good guiding of the transmitter to ensure good accuracy

7. Wiring



8. Size

Receiver



Emitter

