

EC DECLARATION OF CONFORMITY

This document is the conformity declaration concerning safety switches and relays, conform to the Machine Directive 2006/42/CE and the Directive 2004/108/CE.

SAFETY SWITCHES

We hereby certify that the hereafter described safety components both in its basic design and construction conforms to the applicable European Directives.

Name of products :

Range	Safety Standards	Approvals/ conformity
BOSTER	IEC 60947-5-2 IEC 60947-5-3 EN 62061 / ISO 13849-1	CE

PL=d acc. EN ISO 13849-1
SIL 2 acc. EN 62061
Classification=PDF-S
acc. EN 60947-5-3
Input Power Supply = 24VDC
Checking period=1/year
PFH=1,42 E-08
PFD=1,24 E-03
PROOF TEST=20 a
dop=365 j
hop=24 h
F=1/h
B10d=2.000.000
Supply : 24 VDC PELV/SELV
Coding level : low acc. ISO 14119
Average level on demand



Description :

Coded safety switch with process Acotom[®] for detects the position of the doors. It can used without safety relay.

Person authorized for the compilation of the technical documentation :

Christophe PAYS

34 Allée du Closeau
93160 Noisy le Grand

Place and date of issue : Noisy, 18 dec. 2014

Authorised signature
Michel Conte
Director

PROCESS ACOTOM[®]



TECHNICAL DATASHEET OF BOSTER

Thank you for your confidence in BTI products.
This product has been designed and manufactured to the highest quality standards.

1. Scope of application

The BOSTER device is coded electronic autonomous sensors using our ACOTOM3® process, allowing the opening of mobile protectors on dangerous machines to be detected.

It is able to detect its own failure and lock itself, preventing the safety line from closing. A sensor consists of two PA6 or 316L stainless steel (AMX5OX) transmitting and receiving parts. The receiver supplies two potential-free NO safety lines and an NC PNP (AMX5 or AMX5OX) auxiliary contact. This safety product must be checked at least once a year.

2. Fixing and wiring

Equipped with two square lugs, the two components can be easily fixed using a 4 mm diameter screw (stainless steel washers provided). The device is to be safely installed in such a way that the transmitter or receiver cannot be dismantled. Special stainless steel anti-tamper screws are available as an option (BH4). The receiver is fitted with a PVC multicore cable that is 5.5 mm in diameter and comes in a standard length of 3, 6 or 12 m (other lengths available on request). The sensor cable has to be wired in such a way that it is protected against external damage by using, for example, mechanical armoring. Once the sensor is wired, it is advised that the safety line (Red-Black or Orange-Grey) be checked, in order to ensure that there is no short-circuit.

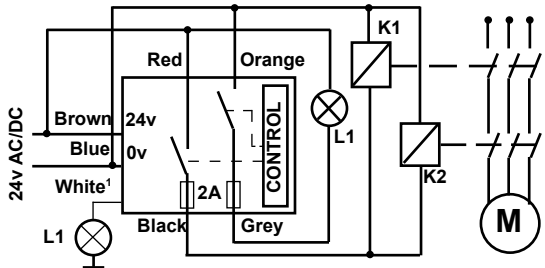
3. Functioning

Supply: 24 VAC/DC. If the two targets of the transmitter and receiver are facing one other, and the code is recognised, the NO lines close and the auxiliary line opens (AMX5 or AMX5OX). The yellow LED lights up. If the code is not recognised, if there is a misalignment or if the sensor detects the failure of one of its safety contacts, the functional line opens. Please ensure that the sensor and receiver do not have mechanical contact when the door is closed and keep a distance of 1 mm between the two parts. Detection is carried out up to a distance of 10 mm. When a material is located between the transmitter and the receiver, a test should be performed to determine the distance of detection. The AMX5 auxiliary line (white) is open when the switch is not supplied. The device is to be installed in such a way that it is not possible to insert parts of the body such as fingers or hands through the door in dangerous areas.

4. Caractéristiques techniques

Supply	24 VAC/DC -15% / +10% 50/60Hz
Consumption	45mA (DC) / 60mA (AC)
Temperature	-25 °C / +60 °C
Protection (EN60529)	IP67/68
Safety Line	48 VAC/DC / 2A pilot duty & general use
Auxiliary output	24 V (PNP NF) / 250mA general use
Detection/Hysteresis	4 mm / 2 mm
Size LxIxxh	Emitteur: 112 x 30 x 14 mm Receiver: 110 x 30 x 26 mm
Weight	Emitteur: 200g / Receiver (3m): 380g

5. Câblage

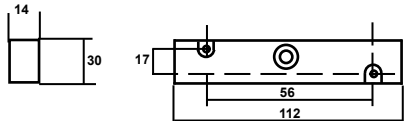


* To protect safety outputs (internal 2A fuse) , you can use external 1.6A fast fuse.

Toute installation de sécurité doit être vérifiée périodiquement.

6. Dimensions (en mm)

Transmitter FF



Receiver FF

