

Power and Control Isolation

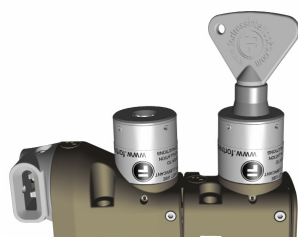
Key Exchange

Door Locks and Actuators

» Multiple Door Interlock

DM

DMS



### Multiple Door Interlock

- No product handling issues:  
*4 head rotation angles with an adjustment of 360° at 90° increments with +/-5° fine adjustment*  
*Two actuator entry points*
- Any combination of isolation/access keys possible
- Sequential or Non-sequential key operation
- Simply add modules to existing configurations
- All DM locks have stainless steel heads
- Tamper resistant head mechanism
- Choice of actuator
- XM(s) modules can be added for system expansion

### Safety Data

Standards	EN1088:1996 EN13849-1:2008 EN13849-2:2012 EN62061:2005
Certifications	CE marked for all applicable directives
Category	Cat. 4, PLe (EN/ISO 13849-1) and SIL3 (EN/IEC 62061)
Functional safety data	B10d 5,000,000

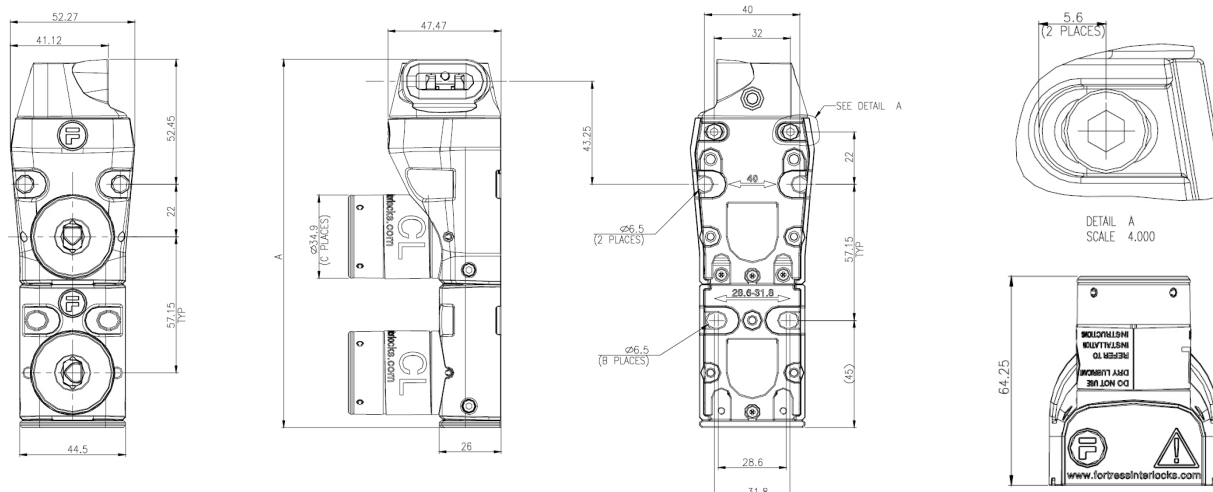
### mGard range

mGard is the ultimate range of robust mechanical trapped key products. Trapped key technology offers purely mechanical access locks (removing the need for expensive wiring). mGard offers an extensive variety of modular interlocking solutions. Suitable for use in applications up to SIL3 (EN/IEC 62061), Category 4 and PLe (EN/ISO 13849-1), mGard is ideal for use in harsh environments and is tested to 1,000,000 operations.

### Technical Specification

Housing Materials Body DM	Die-cast zinc body with pearl bronze plated finish
Housing Materials Body DMS	Full stainless steel to S316
Head	Full stainless steel to S316
Internals	Full stainless steel
Lock Mechanism DM	Die-cast zinc body with stainless operating mechanism (selected separately)
Lock Mechanism DMS	Full stainless steel to S316 (selected separately)
Key	Stainless steel to S316 (purchased separately)

### Dimensional Drawing



### Article Codes

N° of Locks	Part N°
2 » 10	DM2 » DM10
N° of Locks (Full Stainless Steel)	Part N°
2 » 5	DMS2 » DMS5

### Lock Type

Key and lock types must be specified separately

### Actuator Type

Actuator type must be specified separately

Product	Dimension A Overall length	Dimension B N° of slotted holes	Dimension C N° of CL locks
DM(S)2	154.60	2	2
DM(S)3	211.75	4	3
DM(S)4	268.90	6	4
DM(S)5	326.05	8	5
DM6	383.20	10	6
DM7	440.35	12	7
DM8	497.50	14	8
DM9	554.65	16	9
DM10	611.80	18	10