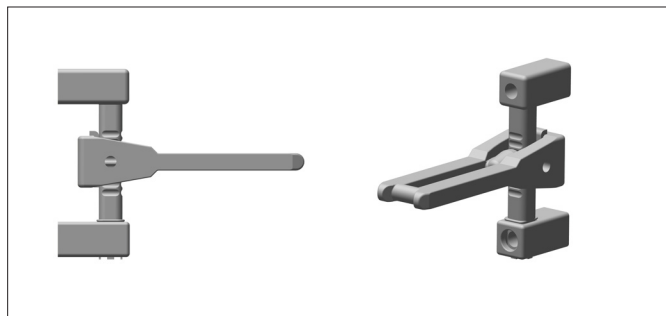


Actuators

proAT Tongue



proAT Tongue

- Used in conjunction with *proAT* Head
- Heavy duty tongue unit.
- Ideal for fast, frequent access.
- Operating radius:- 900mm
- 3 position fixing at 90° increments.
- Misalignment tolerance of +/- 12mm.
- 12mm Overtravel allowance.

proAT Tongue Technical Specification

Materials	Stainless Steel to BS3146
Operating Force	5N
Retention Force Locked	10,000N
Mechanical Life	>1,000,000 Switching Cycles
Performance Level	PLe
B10d	5,000,000
Ambient Temperature	-5°C to 80°C (23°F to 176°F)
Environment	Indoor & Outdoor

proAT Tongue Options

Part Number	Description
TA1	AT Tongue Front Handing
TA2	AT Tongue Left Handing
TA3	AT Tongue Back Handing
TA4	AT Tongue Right Handing

proAT Tongue Ordering Information

Part No.	Item No.
TA1	ITM-00038780
TA2	ITM-00038806
TA3	ITM-00038807
TA4	ITM-00038808

* Item No. or Part No. can be quoted for quotation and ordering purposes.

Safety Functions - proAT Tongue

Safety Function 1	Part No
Provides link from interlock to door	TA

Dimensional Drawing

