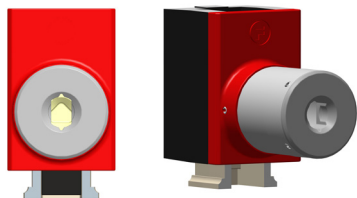


Adaptors

proLock Adaptor - Lock Adaptor for Safety or Access



proLock Adaptor module is used to add to an amGardpro unit, to include the provision of key control functionality. They can be used to provide the function of an access lock, or alternatively provide a safety key function. The releasing versions of the lock adaptors are the type that **MUST** be used in conjunction with any type of internal release function (push IR) or all in one head module with IR Handle.

proLock - Adaptor for Safety

This unit ensures that the door cannot be opened until the key has been turned, and the machine/process cannot be restarted without returning the key(s). It can furthermore prevent personnel being accidentally locked inside a guarded area.

- Provides a unique link to the mGard range.
- Up to 10 key adaptors in one configuration.
- Key sequence - releases all keys at once (runner bar)

proLock - Adaptor for Access

Ideally suited for authorised access only, or linked access to other machinery. Ensures a specific sequence of operation and can be stacked or combined with other adaptors.

- Provides a unique link to the mGard range.
- Up to 10 key adaptors in one configuration.

proLock Adaptor Technical Specification

Housing Materials		Die-cast Zinc Alloy
Paint Finishes	Body	Black
	Lid	Red
	Lock	Satin Chrome Plated
	Lock Front	Stainless Steel
Internals		All Stainless Steel
Mechanical Life		>1,000,000
Performance Level		PLe
B10d		5,000,000
Ambient Temperature		-5°C to 80°C (23°F to 176°F)
Environment		Indoor & Outdoor
Lock Mechanism	CL / ML	Die-cast Zinc Body with Stainless Steel Operating mechanism.

Safety Functions - proLock

Part No

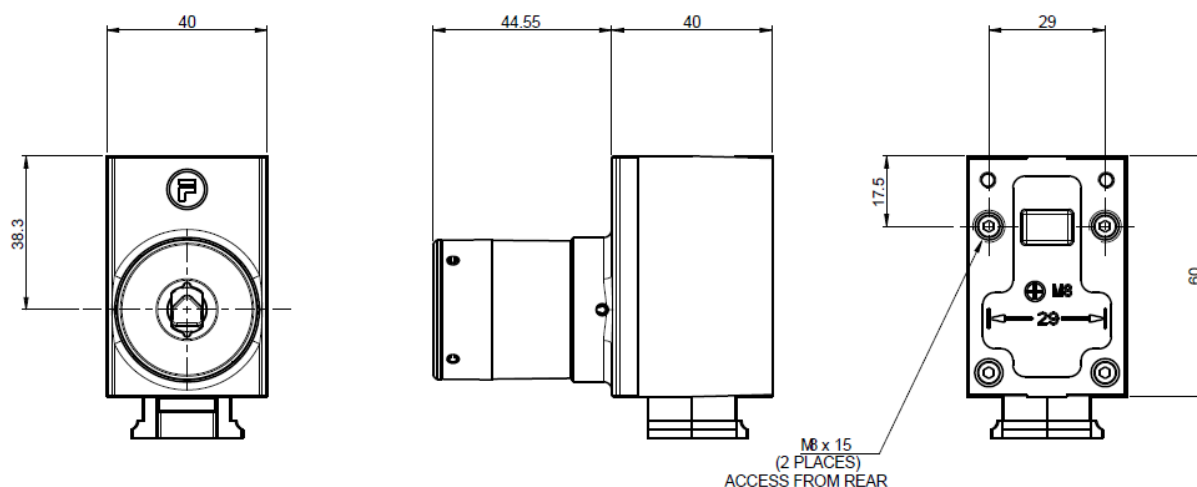
Safety Function 1	Door cannot be opened unless access key inserted in lock	AKL/R
-------------------	--	-------

Safety Functions - proLock

Part No

Safety Function 1	Door cannot be opened unless access key inserted in lock	SKL/R
Safety Function 2	Breaks safety contacts when access key inserted in lock	

Dimensional Drawing



Adaptors

proLock Adaptor - Lock Adaptor for Safety or Access

proLock - Access Adaptor Ordering Information					
Version	Lock Type	Lock Description	Key	Part No.	Item No.
Standard	CLIN	Standard CL Lock no dustcover	x	AKL1	ITM-00038898
Standard	CLIS	Standard CL Lock with stainless steel dustcover	x	AKL2	ITM-00038959
Standard	CLIL	Standard CL Lock with stainless steel padlockable dustcover	x	AKL3	ITM-00038960
Standard	MLIN	Masterable CL Lock no dustcover	x	AKL6	ITM-00038961
Standard	MLIS	Masterable CL Lock with stainless steel dustcover	x	AKL7	ITM-00038962
Standard	MLIL	Masterable CL Lock with stainless steel padlockable dustcover	x	AKL8	ITM-00038963
Releasing	CLIN	Standard CL Lock with stainless steel dustcover	x	AKR1	ITM-00038964
Releasing	CLIS	Standard CL Lock with stainless steel dustcover	x	AKR2	ITM-00038965
Releasing	CLIL	Standard CL Lock with stainless steel padlockable dustcover	x	AKR3	ITM-00038966
Releasing	MLIN	Masterable CL Lock no dustcover	x	AKR6	ITM-00038967
Releasing	MLIS	Masterable CL Lock with stainless steel dustcover	x	AKR7	ITM-00038969
Releasing	MLIL	Masterable CL Lock with stainless steel padlockable dustcover	x	AKR8	ITM-00038970
*Releasing versions are they type that MUST be used if used in conjunction with any type of internal release function (push IR) or all in one head module with IR Handle.					
*The Item No. or Part No. can be quoted for quotation and ordering purposes.					

proLock - Safety Adaptor Ordering Information						
Version	Key Sequence	Lock Type	Lock Description	Key	Part No.	Item No.
Standard	Runner Bar	CLIN	Standard CL Lock no dustcover	x	SKL1	ITM-00038909
Standard	Runner Bar	CLIS	Standard CL Lock with stainless steel dustcover	x	SKL2	ITM-00038910
Standard	Runner Bar	CLIL	xStandard CL Lock with stainless steel padlockable dustcover	x	SKL3	ITM-00038911
Standard	Runner Bar	MLIN	Masterable CL Lock no dustcover	x	SKL6	ITM-00038912
Standard	Runner Bar	MLIS	Masterable CL Lock with stainless steel dustcover	x	SKL7	ITM-00038913
Standard	Runner Bar	MLIL	Masterable CL Lock with stainless steel padlockable dustcover	x	SKL8	ITM-00038920
Releasing	Runner Bar	CLIN	Standard CL Lock no dustcover	x	SKR1	ITM-00038936
Releasing	Runner Bar	CLIS	Standard CL Lock with stainless steel dustcover	x	SKR2	ITM-00038937
Releasing	Runner Bar	CLIL	Standard CL Lock with stainless steel padlockable dustcover	x	SKR3	ITM-00038939
Releasing	Runner Bar	MLIN	Masterable CL Lock no dustcover	x	SKR6	ITM-00038940
Releasing	Runner Bar	MLIS	Masterable CL Lock with stainless steel dustcover	x	SKR7	ITM-00038941
Releasing	Runner Bar	MLIL	Masterable CL Lock with stainless steel padlockable dustcover	x	SKR8	ITM-00038942
*Releasing versions are they type that MUST be used if used in conjunction with any type of internal release function (push IR) or all in one head module with IR Handle.						
*Runner Bar Sequence - Keys freed in any sequence.						
*The Item No. or Part No. can be quoted for quotation and ordering purposes.						