

Adaptors

proLock Adaptor - Lock Adaptor for Safety or Access



The proLock Adaptors for Safety / Access are an optional attachment for the amGardpro range.

The normal use of the Safety Key adaptor is to provide the machine operator a safeguard whilst within the guard perimeters.

The normal use of the Access Key adaptor is to prevent unauthorised personnel from opening a guard and stopping a machine.

IMPORTANT

This product is designed for use according to the installation and operating instructions enclosed. It must be installed by competent and qualified personnel who have read and understood the whole of this document prior to commencing installation. If the equipment is used in a manner not specified by the manufacturer, the protection provided by the equipment may be impaired. Any modification to or deviation from these instructions invalidates all warranties. Fortress Interlocks Ltd accepts no liability whatsoever for any situation arising from misuse or misapplication of this product.

It is vitally important that the correct version of this unit is selected. If there is any requirement for an internal release element in the product, then the releasing version must be used.

WARNING: ENSURE CAM IS CORRECT TYPE AND POSITION BY TESTING SEQUENCE.

BEWARE OF INTENTIONAL MISUSE CAUSED BY OPERATORS WANTING TO BYPASS SAFETY SYSTEMS. THE INSTALLER SHOULD ASSESS THE RISKS AND MITIGATE AGAINST THEM.

IF YOU HAVE ANY QUESTIONS OR QUERIES OF ANY NATURE WHATSOEVER PLEASE CONTACT THE SUPPLIER WHO WILL BE PLEASED TO ADVISE AND ASSIST.

Tools and Fixings Required

2.5mm A/F Hex wrench (Torque Setting 0.8 - 1.0 Nm)
Ø8.2mm Drill
2 x M8 screws

Mount the safety unit only in the correctly assembled condition.

1. Locate the safety unit so that inspection and replacement are possible.
2. Mount the enclosure assembly together with head assembly to a flat metal, static part of the machine. Use M8 screws from the rear. The mounting surface should be flat.
3. Refit any lids to host units after cabling is completed.
4. All fixing screws must be permanently prevented from removal, either by vibration or by personnel using standard tools.

Protection Against Environmental Influences

A lasting and correct safety function requires that the unit be protected against the ingress of foreign bodies such as swarf, sand, blasting shot, etc. The unit is to be mounted away from the machine, or by the use of anti-vibration mountings, in order to avoid the effects of vibration, shock and bump.

Testing (Unpowered)

The complete guard installation should be tested prior to use.

Access Key Module: All these keys should be inserted and rotated before access if possible. Safety circuits are normally opened on rotation of access key.

Safety Key Module: All locking means (access lock(s) and / or solenoid) will require unlocking before any safety key can be removed. Head (where fitted) will require the top safety key (or all if cam sequence) to be rotated before it will unlock. Safety circuits remain open, access keys will be trapped and head will not lock until all safety keys (including any extracted key) are returned and rotated. Restoration of the protection is necessary before normal operation is resumed.

Warning: This device does not contain the reset facility after emergency and auxiliary release of guard locking. Additional measures are required to achieve the reset of the machine system.

Service and Inspection

Regular inspection of the following is necessary to ensure trouble-free, lasting operation:
- Correct operating function

- Secure mounting of components
- Debris and wear
WD40, every 10,000 operations.
There are no user serviceable parts in this product. If damage or wear is found with an assembly, please contact your local Fortress stockist.
The complete interlock must be replaced after 1 million switching operations.

Disposal

This interlock does not contain any certified hazardous materials so should be disposed of as industrial waste.

Liability coverage is voided under the following conditions:

- If these instructions are not followed - non-compliance with safety regulations
- Installation and electrical connection not performed by authorised personnel
- Non-implementation of functional checks.

Environmental Specification

Environment Type: Indoor & Outdoor
Max. Altitude: 2000m

Ambient Temperature: -5°C to +80°C
Maximum Relative Humidity: 80%@≤31°C; 50%@40°C
Vibration: Tested in accordance with: GS-ET-19

Protection Against Environmental Influences

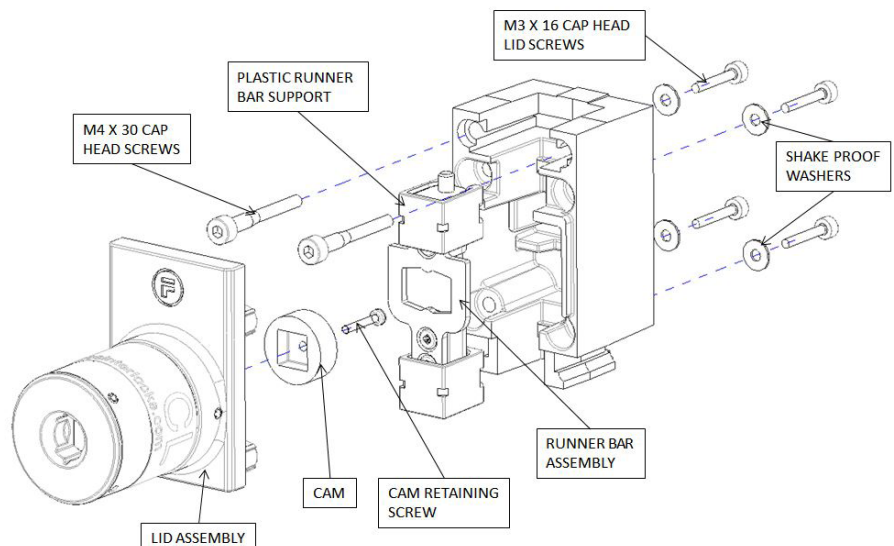
A lasting and correct safety function requires that the unit be protected against the ingress of foreign bodies such as swarf, sand, blasting shot, etc. The unit is to be mounted away from the machine, or by the use of anti-vibration mountings, in order to avoid the effects of vibration, shock and bump.

Use in Dusty Environments: Careful product selection is required, which is best performed under the guidance of a Fortress Sales Representative, in order to assess the dust type and product style required.

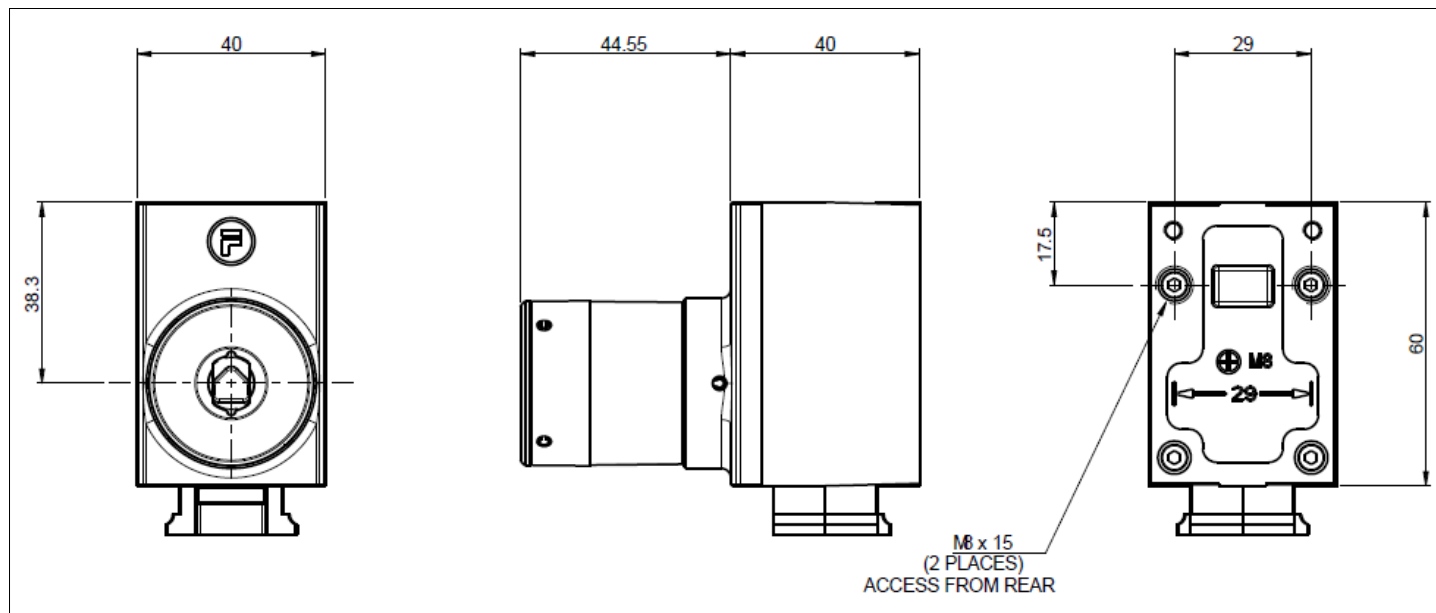
Use in Corrosive Environments is not allowed

The manufacturer reserves the right to modify the design at any time and without notice.

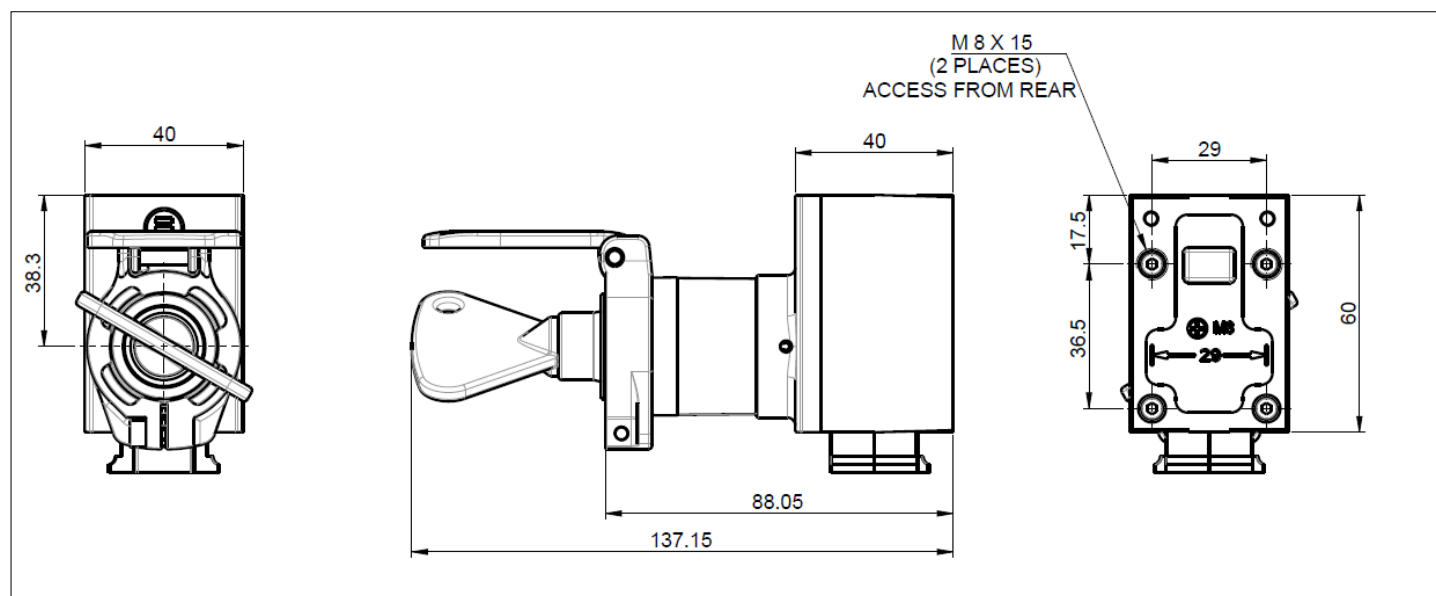
This guide should be retained for future reference.



Dimensional Drawing



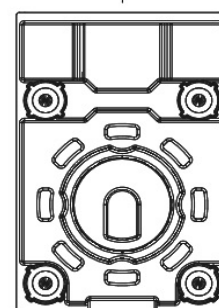
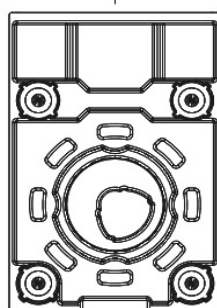
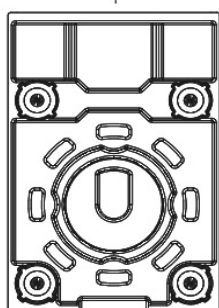
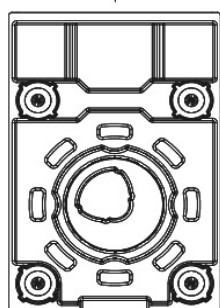
proLock with Dust cap Dimensional Drawing



CAM POSITIONS

ACCESS KEY: KEY OUT, RUNNER BAR UP

SAFETY KEY: KEY OUT, RUNNER BAR DOWN



BI-DIRECTIONAL CAM

UNI-DIRECTIONAL CAM

BI-DIRECTIONAL CAM

UNI-DIRECTIONAL CAM