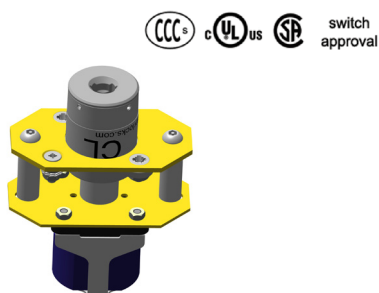


Power and Control Isolation » Key Switch (back of board)

Key Exchange

Door Locks and Actuators

S



#### Key Switch (back of board)

The S unit is suitable for isolation or switching current and may be used to isolate power to machinery.

- Direct drive operation - positively opens contacts
- The standard sequence is: Key trapped - Power on, Key free - Power off (other sequences can be specified)
- Special switch ratings and/or contact arrangements available on request

#### Safety Data

Standards	EN60947-3:2009 EN1088:1996 EN13849-1:2008 EN13849-2:2012 EN62061:2005	
Certifications	CE marked for all applicable directives	
Category	Cat. 4, PLe (EN/ISO 13849-1) and SIL3 (EN/IEC 62061)	
Functional safety data	B10d	5,000,000
	DC	High 99% (with correct monitoring)

#### mGard range

mGard is the ultimate range of robust mechanical trapped key products. Trapped key technology offers purely mechanical access locks (removing the need for expensive wiring). mGard offers an extensive variety of modular interlocking solutions. Suitable for use in applications up to SIL3 (EN/IEC 62061), Category 4 and PLe (EN/ISO 13849-1), mGard is ideal for use in harsh environments and is tested to 1,000,000 operations.

#### Technical Specification

Mounting Plate	Zinc Plated Mild Steel
Lock Mechanism	Die-cast zinc body with stainless steel operating mechanism (selected separately)
Key	Stainless steel (selected separately)

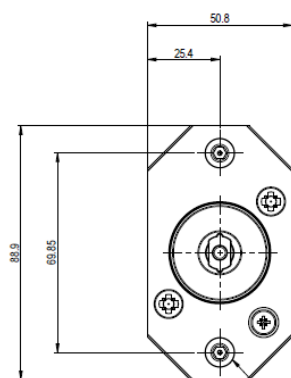
#### Article Codes

Mounting	Part N°
Back of Board	S
Lock Type	
Key and lock types must be specified separately	
Switch Current	Part N°
20A	A020
32A	A032
63A	A063
Switch Contacts	Part N°
4NO/0NC	40
2NO/2NC	22

#### Wiring Diagram - Key Free

4NO/0NC	1 — 2	3 — 4	5 — 6	7 — 8
2NO/2NC	1 — 2	3 — 4	5 — 6	7 — 8

#### Dimensional Drawing



TO MOUNT UNIT, DRILL PANEL  
Ø6.5 IN 2 PLACES, REMOVE  
PIN HEX SCREWS AND REFIT  
THROUGH THE PANEL.

