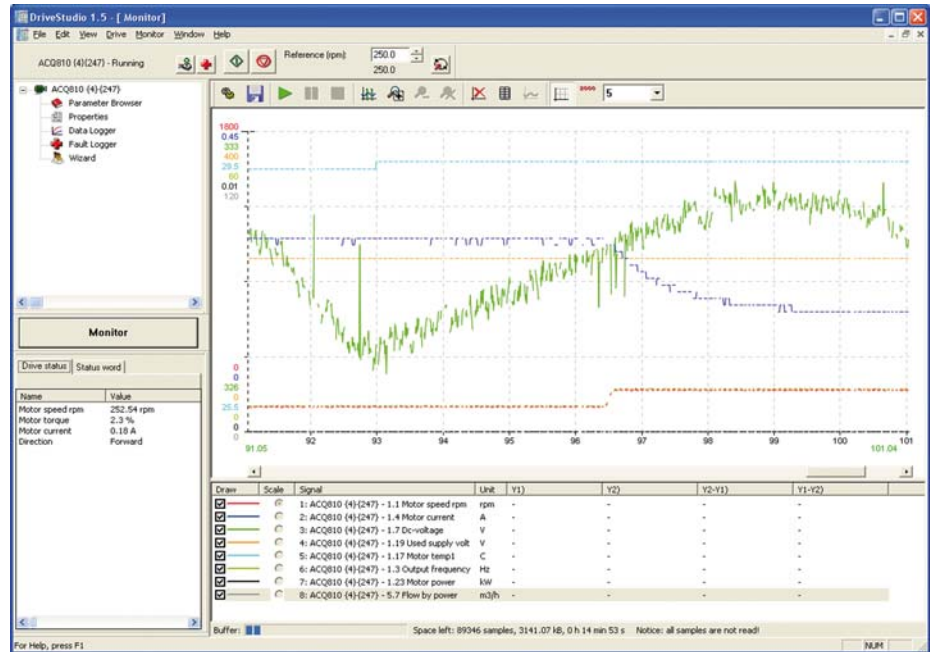


Drive PC tools Start-up and maintenance DriveStudio

DriveStudio is an easy to use software tool designed for use throughout a drive's life cycle from startup, monitoring, to performance tuning. DriveStudio's configuration wizards simplify drive commissioning and configuration. DriveStudio is designed for use with ABB high performance machinery drives, ACSM1, and ABB industrial drive modules, ACS850 and ACQ810.



A tool for the entire life cycle

DriveStudio makes drive commissioning easier and more efficient, and enables monitoring of user-selected parameters and signals. It allows users to take control of the drive from the PC, provides access to the data and fault loggers, and provides configuration wizards for simplified drive setup.

View, set and compare parameters

The parameter browser displays the drive's parameters and signals. Users may view and set parameters, compare changes between the current set and the previous one, or compare against the drive's default values. Additional parameter information is available via a firmware manual link in the parameter browser. Separate parameter browsers are opened for each connected drive.

Wizards for efficient setup

Drive Studio's configuration wizards simplify setting up application and communication parameters. All of the relevant drive parameters are shown in the wizard window. This helps ensure

proper configuration and reduces commissioning time. Wizards can be used to configure settings such as the motor, PROFIBUS and CanOpen settings, and application settings such as the ACSM1 winder application.

Monitoring drive performance

Monitoring a drive's performance helps engineers tune drives for optimal performance and efficiency. DriveStudio's monitor window lets users select parameters and signals to view graphically or numerically. More than one drive can be monitored at the same time. The data from the monitoring session may be stored on the PC for later analysis.

PC based drive control

DriveStudio provides a built-in drive control panel allowing users to reset faults, start, stop, set the direction and speed reference values of the connected drive.

Backup and restore

Drive parameters can be saved to file creating a backup of drive configurations. These files include any user defined parameter sets, SPC programs or cam files. The backup files can be used to restore drives or to configure new drives or spare control boards.

Fault logger

Drive faults can be viewed and cleared using the fault logger window. Each fault is displayed along with data about the status of the drive during the fault such as motor speed, output frequency, and motor current.

Data logger

The data logger lets users capture drive data based on pre-defined triggers or by selecting parameter values. The captured data can be viewed graphically or numerically, and can be saved for analysis.

Highlights

- Set, view, compare, and save parameters
- View listing of last changed parameters
- Configuration wizards for easy commissioning
- Backup and restore
- Monitor signals graphically and numerically
- Control the drive from the PC
- View and clear faults
- Set triggers for data monitoring and collection
- Used throughout the drive's life cycle

Supported drives

- ACS850-04
- ACQ810-04
- ACSM1

Connectivity options

- USB to serial adapter, PC to drive
- PC serial port to drive

Supported operating systems

- Windows XP, Vista and Windows 2000

Ordering information and technical support

Contact your local ABB or visit www.abb.com/drives and select the link for Drive PC Tools.

Email: drive.care@fi.abb.com

For more information please contact:

www.abb.com/drives
www.abb.com/drivespartners

© Copyright 2009 ABB. All rights reserved.
Specifications subject to change without notice.

Efficiently enter motor parameters using the motor setup wizard.

The configuration wizard simplifies setting PROFIBUS parameters.